



FAEIS Newsletter

October 1, 2008

In This Issue:

[Annual College Enrollment Survey](#)
[AASCARR Enrollment and Diversity](#)

Greetings from the FAEIS team at Virginia Tech. If you are not familiar with this important project from USDA/CSREES, [click here](#) to read about FAEIS and why it is important to you.

[Annual College Enrollment Survey](#)

Each fall the FAEIS office conducts an annual phone/e-mail survey to obtain the total fall enrollment for each college at each institution participating in FAEIS. These numbers (total undergraduate and graduate enrollment) will encompass all degree programs in your college. Additional information in this survey includes programs added and dropped in 2008 and non-degree programs offered at your college.

The FAEIS office will be in contact with your Academic Programs office to obtain the total fall 2008 enrollment for your college. Please return your results for this survey by November 3, 2008.

Results from the 2007 College Enrollment Survey are posted under [FAEIS Reports](#).

[AASCARR Enrollment and Diversity](#)

Along with the 1862 and 1890 Land Grant Institutions, programs from the American Association of State Colleges of Agriculture and Renewable Resources (AASCARR) make a major contribution to nationwide agriculture enrollment. In this newsletter issue we look at enrollment and diversity of programs at AASCARR institutions. To see the list of the AASCARR institutions and their FAEIS enrollment, go to [FAEIS Reports](#).

The following charts and graphs includes data for all AASCARR institutions which have reported in FAEIS. Some variability can be explained by changes or differences in CIP code use by institutions and by different sets of institutions reporting from one year to the next.

Bachelor's Degree Enrollment in Agriculture Academic Areas for AASCARR Institutions Reporting in FAEIS

<u>Academic Area</u>	<u>2005</u>	<u>2006</u>	<u>2007</u>
Animal Sciences	3,244	3,338	4,188
Agricultural Business and Management	3,228	3,019	3,424
Agricultural Public Services	1,406	1,283	1,536
Agriculture, General	2,021	1,401	1,511
Plant Sciences	1,092	1,054	1,128
Food Science and Technology	466	583	697
Agricultural Production Operations	57	505	648
Pre-Veterinary Studies	422	987	487
Applied Horticulture/Horticultural Business Services	318	442	457
Agricultural Mechanization and Engineering	432	402	418
Soil Sciences	88	87	89
Agricultural and Domestic Animal Services	398	176	84
Biotechnology	19	24	32
International Agriculture	0	3	13
TOTAL	13,191	13,304	14,712

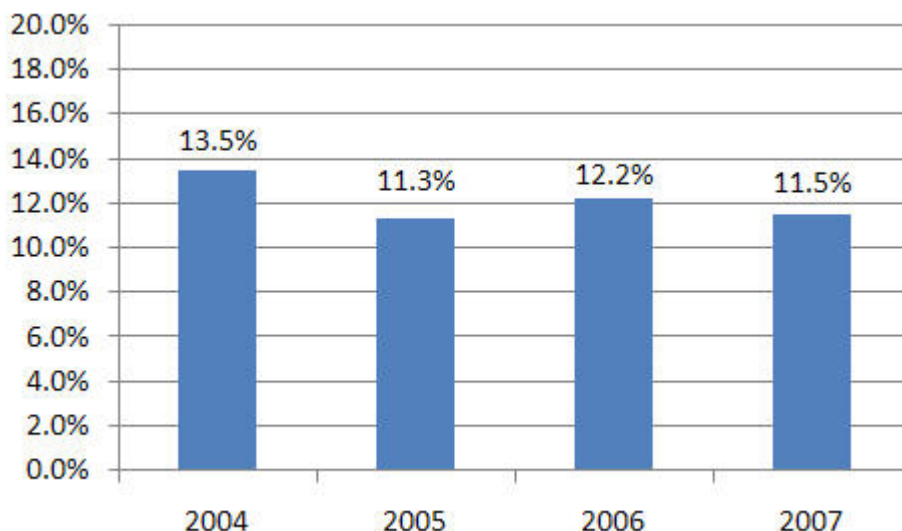
- 32/40 AASCARR programs have provided data to FAEIS in the last two years.
- One AASCARR program with 516 undergraduates in 2006, did not provide undergraduate enrollment for 2007.
- Reported enrollment is increasing.
- Specialization is increasing.

Masters and Doctoral Degree Enrollment in Agriculture Academic Areas for AASCARR Institutions Reporting in FAEIS

<u>Areas</u>	<u>2005</u>	<u>2006</u>	<u>2007</u>
Agriculture, General	324	276	271
Animal Sciences	122	153	136
Plant Sciences	143	142	121
Agricultural Public Services	159	174	110
Agricultural Business and Management	78	79	100
Food Science and Technology	44	35	38
Applied Horticulture/Horticultural Business Services	16	13	14
Soil Sciences	4	5	7
Agricultural Mechanization and Engineering		3	5
TOTAL	890	880	802

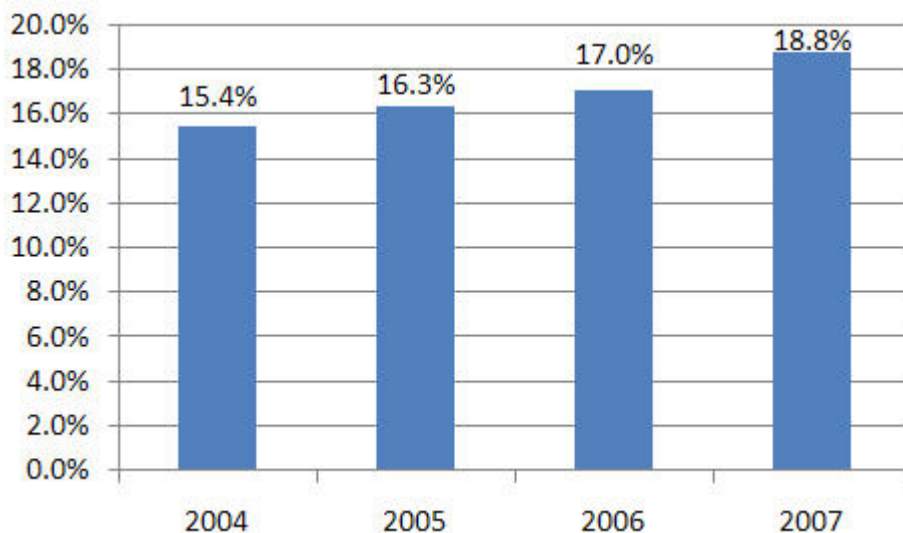
- Data reported from 24/40 AASCARR institutions.
- Two institutions, with 169 graduates reported in 2006, did not report graduate enrollment for 2007.

Percent Minority Enrollment in Associates and Baccalaureate Programs at AASCARR Institutions for All Disciplines Reported in FAEIS



- Unknown race and non-US citizens eliminated from the analysis.
- 37 Institutions contributing to the report.
- Data includes FCS/Human Sciences and Forestry/Natural Resources disciplines.
- Diversity staying constant around 11-12%.

Percent Minority Enrollment in Associates and Baccalaureate Programs at NASULGC Institutions for All Disciplines Reported in FAEIS



- Unknown race and non-US citizens eliminated from the analysis.
- 76 Institutions contributing to the report.
- Data includes FCS/Human Sciences and Forestry/Natural Resources disciplines.
- Data includes 1890 Land Grant institutions.
- Diversity is increasing.

Have a question?

Ask FAEIS



Food and Agricultural Education Information System
 Virginia Tech, Mail Code: 0169
 Corporate Research Center, Building VII
 Blacksburg, VA 24061
 Help Desk: (540) 231-4941
faeis@vt.edu, <http://faeis.usda.gov/>





Technology resources provided by [Agriculture, Human and Natural Resources Information Technology](#),
College of Agriculture and Life Sciences, Virginia Tech